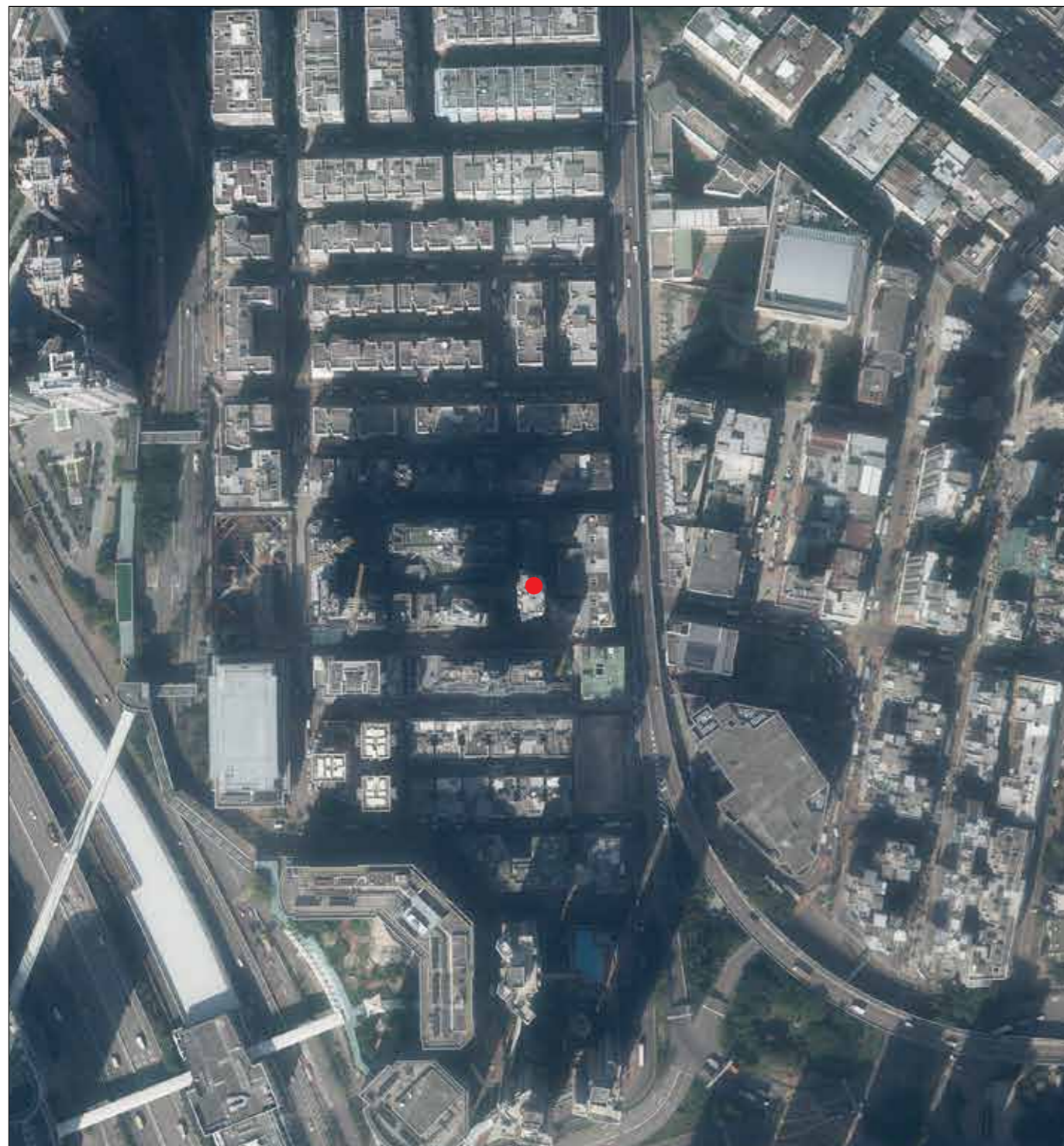



## AERIAL PHOTOGRAPH OF THE DEVELOPMENT 發展項目的鳥瞰照片

Adopted from part of the aerial photograph taken by the Survey and Mapping Office of the Lands Department at a flying height of 6,900 feet, Photo No. E117781C, dated 7 December 2020.  
摘錄自地政總署測繪處日期為2020年12月7日在6,900呎的飛行高度拍攝之鳥瞰照片，照片編號E117781C。



 Location of the Development  
發展項目的位置

Survey and Mapping Office, Lands Department, The Government of the Hong Kong SAR © Copyright reserved – reproduction by permission only.

Note:  
Copy of the aerial photograph of the Development is available for free inspection at the sales office during opening hours.

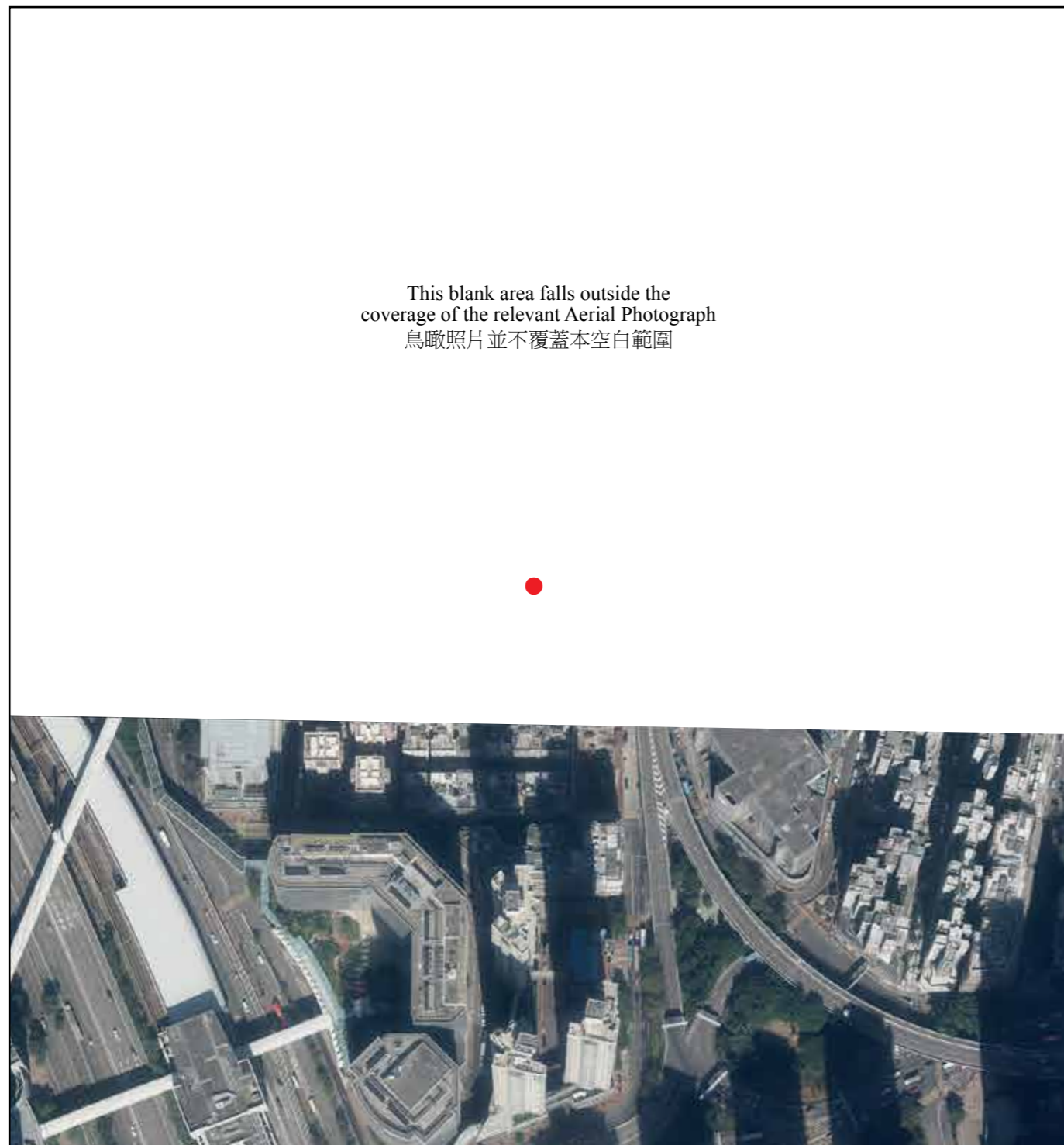
香港特區政府地政總署測繪處 © 版權所有，未經許可，不得複印。

附註：  
發展項目的鳥瞰照片之副本可於售樓處開放時間內免費查閱。

## AERIAL PHOTOGRAPH OF THE DEVELOPMENT

### 發展項目的鳥瞰照片

Adopted from part of the aerial photograph taken by the Survey and Mapping Office of the Lands Department at a flying height of 6,900 feet, Photo No. E142822C, dated 3 December 2021.  
摘錄自地政總署測繪處日期為2021年12月3日在6,900呎的飛行高度拍攝之鳥瞰照片，照片編號E142822C。



● Location of the Development  
發展項目的位置

Survey and Mapping Office, Lands Department, The Government of the Hong Kong SAR © Copyright reserved – reproduction by permission only.

Note:  
Copy of the aerial photograph of the Development is available for free inspection at the sales office during opening hours.

香港特區政府地政總署測繪處 © 版權所有，未經許可，不得複印。

附註：  
發展項目的鳥瞰照片之副本可於售樓處開放時間內免費查閱。